



**DEFINED  
DYNAMICS**

FUTURE READY, SUSTAINABLE BUSINESS

[defineddynamics.co.za](http://defineddynamics.co.za)

# NEWSBULLETIN

## In This Issue:

### AI - A NECESSARY EVIL OR A STRATEGIC PARTNER?

Like it or not, AI is here to stay. From small business to large corporates, smart and savvy business operators, C Suites and CEO's understand that AI provides tools for optimisation, enhancing operational efficiencies and freeing up people to engage more in heart led, high value work.

Insights from McKinsey and other thought leaders highlight a landscape where AI is not only reshaping industries but also redefining the human role in organizations.

At Defined Dynamics, we are committed to guiding leaders and teams through these transformative times. We believe that AI is vital to ensure future ready sustainable business. AI excels in processing data, but the human element—empathy, ethics, creativity, and connection—remains irreplaceable.

#### **In This Edition:**

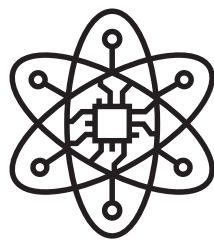
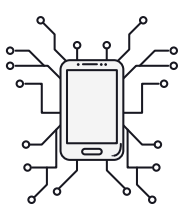
- The Role of AI in 2025: Trends Shaping Business
- The Human Factor in an AI World*
- How Job Roles are Being Elevated in an AI World
- New Skill Sets for the Future Workforce*
- How People Departments can Lead Transformation

#### **The Call to Action for Organisations in an AI-driven World:**

In the business world today, success hinges on how well organisations elevate human potential alongside technological advancement.

The challenge for leadership is to ensure their people and the organisation remains at the heart of innovation and growth remain relevant in the midst of such rapid and fluid change.

By focusing on high-value work, fostering hybrid skill sets, and transforming learning strategies, leaders can create a workforce that thrives in the face of change



## 2025: AI Trends Shaping Business

1. AI as a Strategic Partner is central to decision-making, customer engagement, and innovation that supports leaders to make data-driven agile decisions, as they anticipate and respond to market changes
2. Enabling the workforce with generative AI tools and predictive analytics, AI powers automating repetitive tasks. Job roles are elevated, new skills that blend technical expertise with creativity and critical thinking enable teams to focus on high-value work
3. The Rise and Critical Role of the Chief Wellness Officer (CWO) with a focus on humanising AI so that technology enhances, rather than detracts from employee satisfaction and mental health.
4. Ethical AI and Trust: Leaders must take responsibility for ethical AI and transparent deployment, building trust with both employees and customers.
5. AI for Sustainability - AI promotes resource optimisation, reduction of waste, sustainable operations and environmental responsibility, aligning with global sustainability trends

## The Human Factor in an AI World

AI excels in processing data, but the human element—empathy, ethics, creativity, and connection—remains irreplaceable.

Defined Dynamics recognises the need to balance AI and human capabilities.

- **Upskilling and Reskilling:** Continuous learning programs ensure that leaders and teams remain ahead of AI advancements.
- **Human-Centric AI Design:** Incorporating feedback from employees ensures AI tools are intuitive, user-friendly, and aligned with organisational needs.
- **Leadership Resilience:** AI can predict challenges, but human leaders must inspire and motivate their teams to navigate those challenges with agility and courage.



An Invitation

### Technical Expertise

Data literacy  
Digital fluency  
Cybersecurity awareness

### Creativity & Innovation

Ideation  
Design thinking

## New Skills Sets for a Future Workforce

### Critical Thinking & Problem Solving

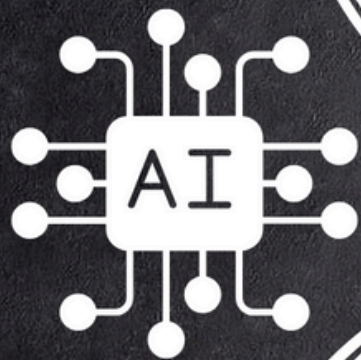
Analytical reasoning  
Systems thinking

### Emotional Intelligence & Leadership

Empathy  
Change leadership

### Adaptability & Lifelong Learning

Growth mindset  
Resilience



# How Job Roles Are Being Elevated in an AI-Driven World

As automation and AI are reshape the workplace, roles requiring deeper expertise, problem-solving, and innovation. In the new world of work, job roles emphasise high-value work and tasks that require uniquely human capabilities like emotional intelligence, strategic thinking, and creativity

HIGH VALUE WORK	EXAMPLE
<b>Strategic Decision-Making</b> - AI provides data-driven insights so that leaders are able to interpret these insights in context, making decisions that balance logic with intuition.	A marketing analyst identifies customer behaviour trends and crafts campaigns that emotionally resonate with target audiences using AI.
<b>Complex Problem-Solving</b> - employees focus on resolving multifaceted challenges that require innovative approaches knowing routine tasks are being taken care of	A supply chain manager identifies bottlenecks using AI analytics and collaborates with cross-functional teams to design more efficient workflows.
<b>Human-Centered Design</b> - AI can analyze user data, but humans create products and experiences that connect emotionally with users	Designers and UX specialists use AI-driven user insights to build empathetic, customer-centric solutions.
<b>Leadership and Team Development:</b> People managers focus on nurturing talent, fostering collaboration, and aligning teams with organizational goals.	HR leaders use AI-driven feedback tools to identify engagement gaps and implement targeted culture-building initiatives.



# Transforming Learning, Training and Development Strategies

## Forward Thinking Learning Strategies - Future Ready Teams

<b>STRATEGIC FOCUS AREAS FOR LEARNING AND DEVELOPMENT</b>	<b>INITIATIVE</b>
<b>Personalized Learning Paths</b> Use AI to tailor training programs to individual needs, learning styles, and career goals	Adaptive learning platforms suggest relevant courses based on employees' roles and skill gaps.
<b>Blended Learning Models</b> Combine digital training (e-learning, simulations) with experiential and collaborative learning	Virtual reality simulations for leadership training paired with live group mentoring sessions.
<b>Building Digital Literacy Across Roles</b> Ensure every employee, regardless of their function, understands AI and its impact on their work	Basic AI literacy courses for non-technical staff to demystify automation.
<b>Fostering Creativity and Innovation</b> Provide training in creative problem-solving, design thinking, and innovation methodologies.	Workshops that simulate real-world challenges and encourage cross-disciplinary collaboration.
<b>Developing Soft Skills for the Future</b> Focus on emotional intelligence, communication, and adaptability to complement technical skills.	Training programs on empathy in leadership and managing virtual teams.
<b>Promoting a Culture of Continuous Learning</b> Encourage self-directed learning by offering access to digital libraries, AI-powered learning platforms, and peer-to-peer knowledge sharing.	Gamified learning platforms that reward employees for completing courses and sharing insights.
<b>Embedding Agility in Training Programs</b> Design modular, flexible curricula that can quickly adapt to changing business needs.	On-demand microlearning modules that address emerging trends or skill gaps



## *Unlock the Future of Work Where AI Meets Human Potential* **with Defined Dynamics**

Today's rapidly evolving business landscape, requires embracing transformation that marries the capabilities of AI with the unique strengths of human ingenuity. Lead the change, redefine the future of work with Defined Dynamics as your Trusted Advisor. Empower your organisation to:

Elevate high-value work  
- leverage AI to create space for strategic, innovative, and purpose-driven people-centric contributions.

Develop new skill sets that blend technical expertise with creativity, emotional intelligence, and critical thinking

Enable People Departments to implement forward-thinking integrated AI driven dynamic training programs, that empower teams.

Align and balance AI technology and human potential to drive sustainable growth, operational efficiency, and innovation.

Commit to AI and people transformation with Defined Dynamics. Position your organisation at the forefront of the AI and human-powered future. Together, we will create a strategy that adapts to shaping change ensuring your business thrives in an era defined by agility, creativity, and meaningful engagement.

*Contact Us*



076 672 2256



[info@defineddynamics.co.za](mailto:info@defineddynamics.co.za)